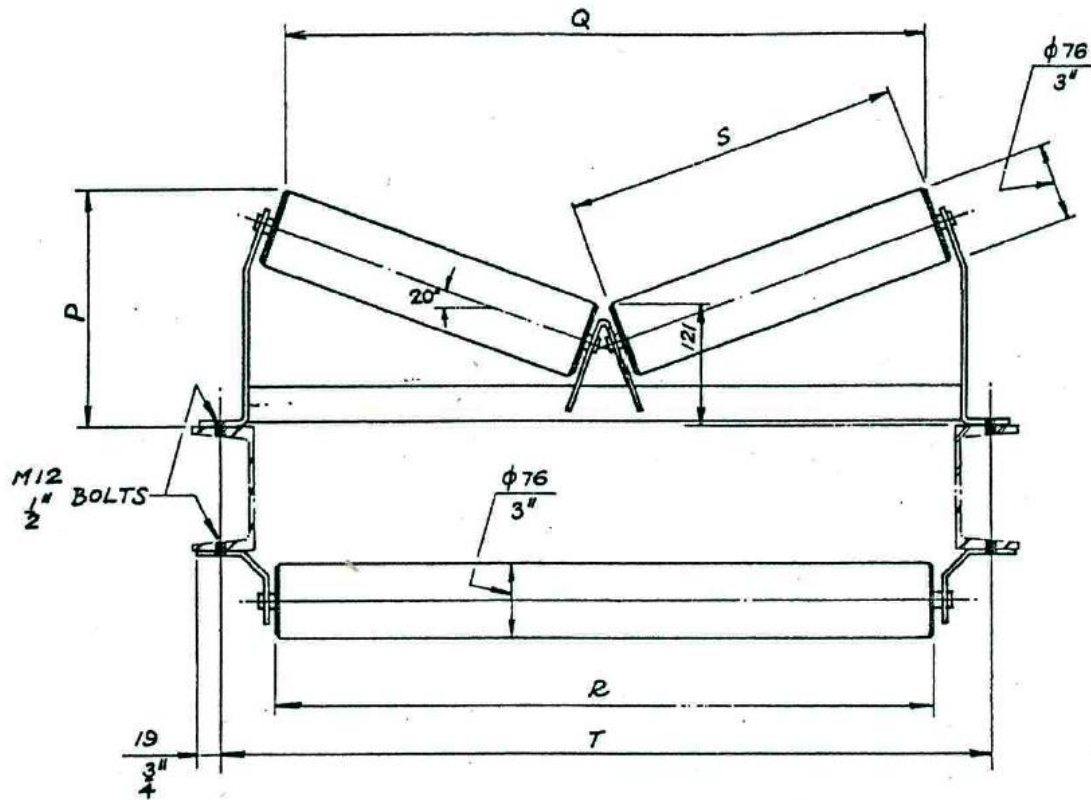


3000S Trough Idlers

Bearing Capacity of Carrying Rolls

Dynamic: 9.806kN

Static: 6.374kN



	Belt (in/mm)	T (in/mm)	S (mm)	P (mm)	Q (mm)
Part 3141	12/305	20/508	197	189	378
Part 3141	14/356	20/508	197	189	378
Part 3181	16/406	24/610	250	208	480
Part 3181	18/457	24/610	250	208	480
Part 3201	20/508	26.5/673	346	240	660
Part 3241	24/610	31/787	346	240	660