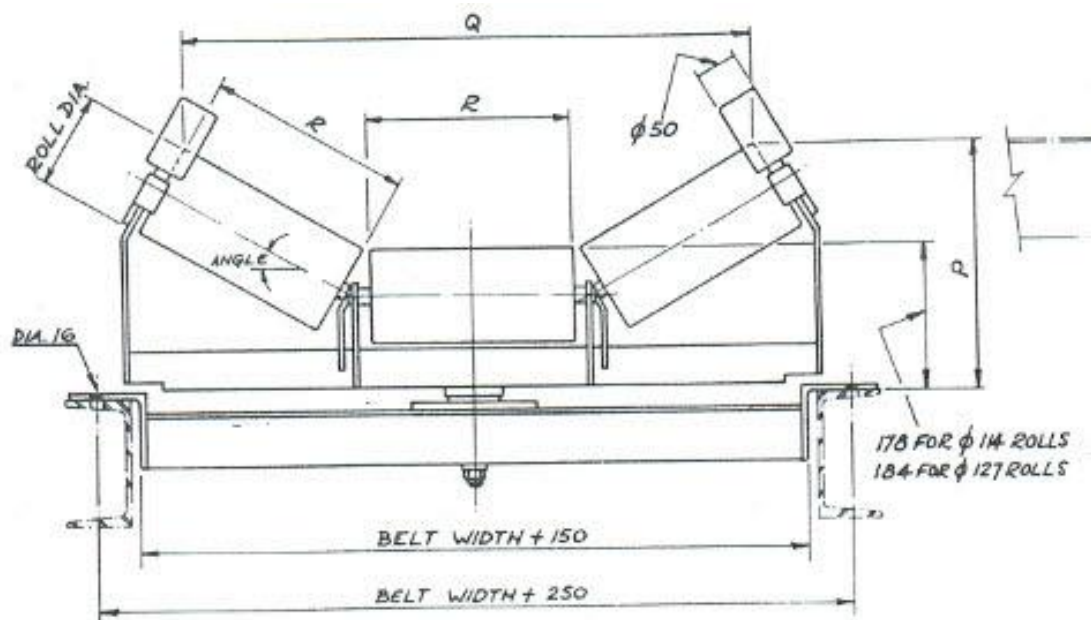


# 9000S Trough Training Idlers 114ø

Sealed for life bearing capacity of belt carrying rolls

Dynamic: 9.806KN

Static: 6.374KN



|                  | R   | P-20° | Q-20° | P-30° | Q-30° | P-35° | Q-35° | P-45° | Q-45° |
|------------------|-----|-------|-------|-------|-------|-------|-------|-------|-------|
| <b>Belt 450</b>  | 178 | 242   | 532   | 267   | 493   | 281   | 477   | 306   | 436   |
| <b>Belt 500</b>  | 194 | 248   | 576   | 275   | 536   | 230   | 518   | 317   | 475   |
| <b>Belt 600</b>  | 228 | 259   | 678   | 292   | 631   | 310   | 608   | 341   | 560   |
| <b>Belt 650</b>  | 243 | 264   | 720   | 299   | 672   | 319   | 650   | 352   | 595   |
| <b>Belt 750</b>  | 279 | 276   | 822   | 317   | 769   | 340   | 742   | 378   | 680   |
| <b>Belt 800</b>  | 293 | 281   | 866   | 324   | 810   | 348   | 780   | 387   | 716   |
| <b>Belt 900</b>  | 330 | 294   | 970   | 343   | 908   | 369   | 878   | 413   | 805   |
| <b>Belt 1000</b> | 358 | 303   | 1050  | 357   | 980   | 385   | 952   | 432   | 870   |
| <b>Belt 1050</b> | 381 | 312   | 1118  | 368   | 1047  | 398   | 1014  | 449   | 926   |
| <b>Belt 1200</b> | 435 | 330   | 1274  | 395   | 1194  | 428   | 1156  | 487   | 1058  |