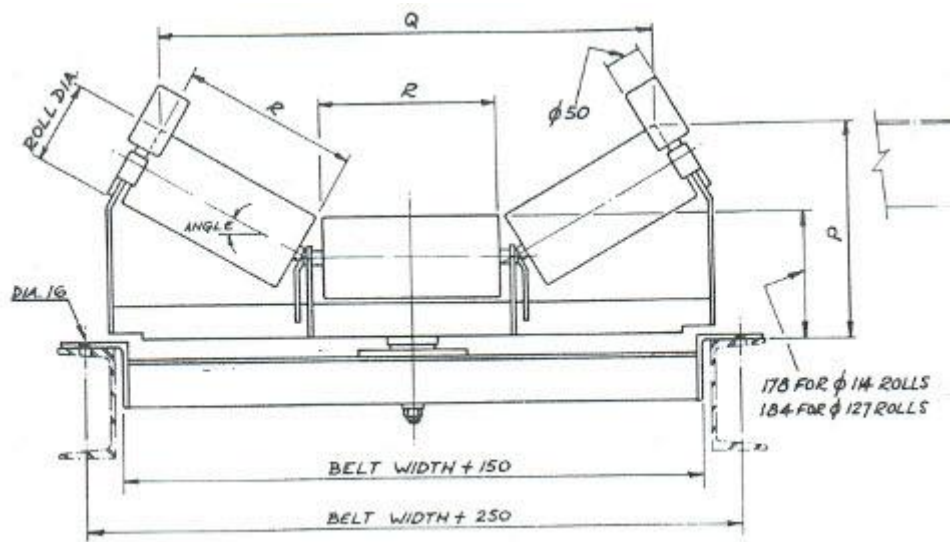


# 9000S Trough Training Idlers 127ø

Also available with heavy duty bearings

Dynamic: 12.26KN

Static: 7.70KN



	R	P-20°	Q-20°	P-30°	Q-30°	P-35°	Q-35°	P-45°	Q-45°
Belt 450	178	248	528	273	486	286	469	311	427
Belt 500	194	254	572	281	529	295	510	322	466
Belt 600	228	265	674	298	624	315	600	346	551
Belt 650	243	270	716	305	665	324	642	357	586
Belt 750	279	282	818	323	762	345	734	383	671
Belt 800	293								