

Flanged Taper Bush Type Conveyor Pulley

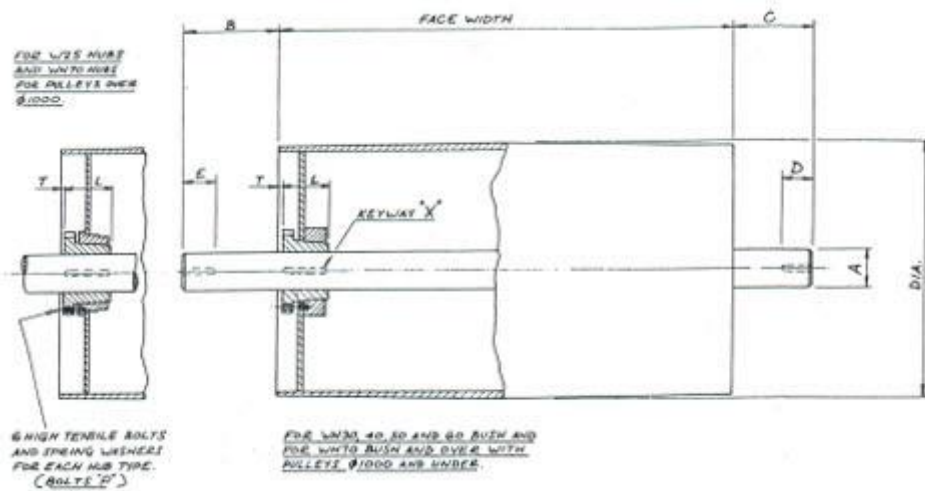
Pulleys are supplied crowned unless otherwise specified

Pulleys are manufactured in the following standard diameters. Other diameters against enquiry

165, 216, 270, 320, 356, 406, 457, 508, 610

Drive pulley shafts are fitted with one key nearest the drive medium. All others without keys unless otherwise specified

Where shafts are specified dimensions shown would be required for manufacture



	Bush No WH25	Bush No WH30	Bush No WH40	Bush No WH50	Bush No WH60	Bush No WH70
Bore Sizes	45, 50, 52, 56, 60, 65	70, 75	80, 85, 90, 95, 100	110, 120, 130	140, 150	160, 170, 180
L	63.5	76	101.5	127	152	178
T Nominal	10	12	12	16	16	25
Bolts "P" Maximum Tightening Torque Nm	47	47	47	95	95	150