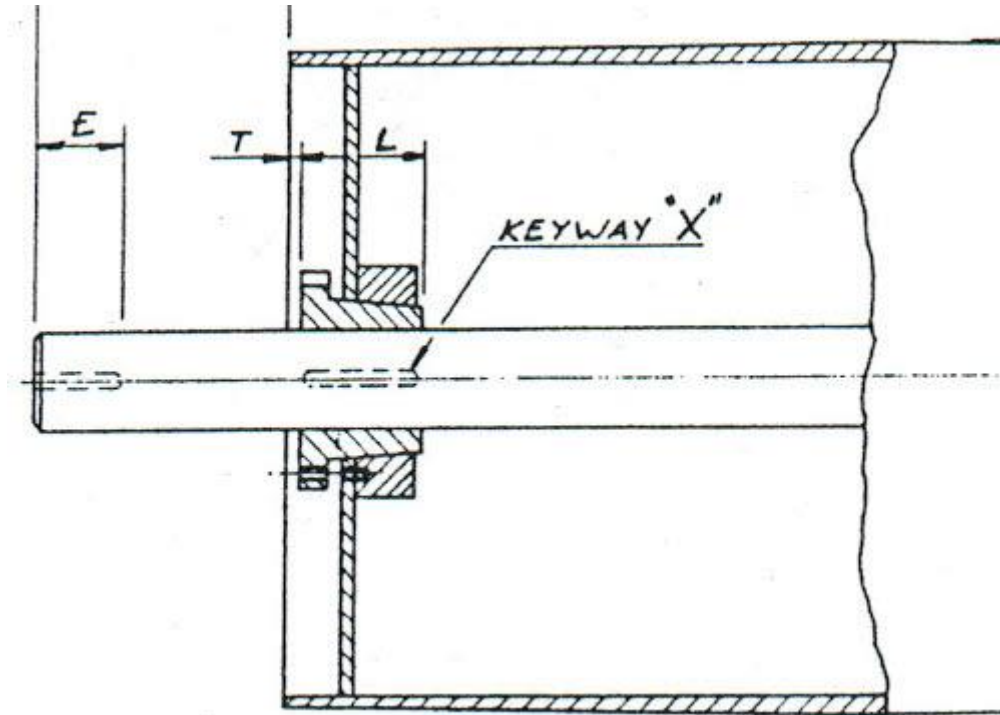


Shaft Keyways

Where specified rubber lagging and herringbone grooving can be supplied. Other types of lagging, including polyurethane and bolt on type, can also be supplied against enquiry.

Normal rubber lagging is 60-70 shore A hardness



	Shaft ϕ	Keyway Length
1	Up to and including 65	70
2	Over 65 to 70	75
3	Over 75 to 100	100
4	Over 100 to 125	125
5	Over 125 to 150	150
6	Over 150 to 200	200