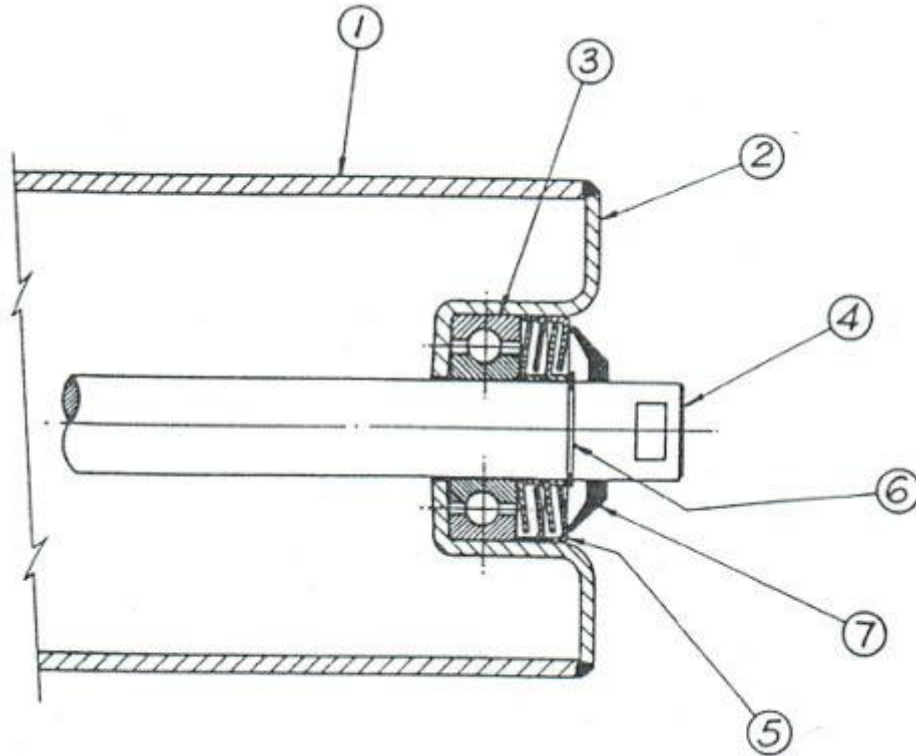


Steel Faced Conveyor Rollers

Typical arrangement of 76, 102, 114 & 127 diameter steel faced conveyor rollers



Steel Faced Conveyor Rollers	
1	Shell - 3.6 Wall Tube to AS 1450
2	End housing - 2.8 mild steel
3	Single row deep groove ball bearing No 6204
4	Dia 20 precision bright mild steel shaft
5	Multi labyrinth seals
6	Standard shaft circlip
7	Nitrile - PVC weather shield