

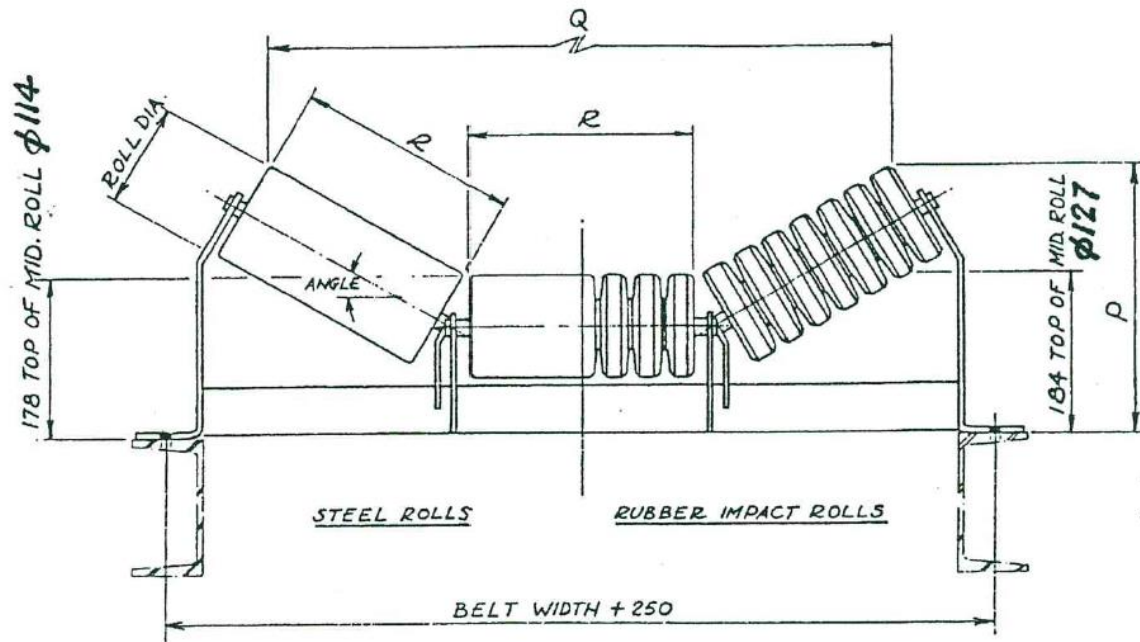
Steel Impact Trough Idlers 127ø

127ø steel rolls also available with heavy duty bearings

Dynamic: 12.26KN

Static: 7.70KN

Impacts also supplied in 152ø and natural rubber & FRAS



	R	P-20°	Q-20°	P-30°	Q-30°	P-35°	Q-35°	P-45°	Q-45°
Belt 450	178	248	528	273	486	286	469	311	427
Belt 500	194	254	572	281	529	295	510	322	466
Belt 600	228	265	674	298	624	315	600	346	551
Belt 650	243	270	716	305	665	324	642	357	586
Belt 750	279	282	818	323	762	345	734	383	671
Belt 800	293	287	862	330	803	353	772	392	707
Belt 900	330	300	966	349	901	374	870	418	796
Belt 1000	358	309	1046	363	973	390	944	437	861
Belt 1050	381	318	1114	374	1040	403	1006	454	917
Belt 1200	435	336	1270	401	1187	433	1148	492	1049